



How to White List

Woolich Racing Tuned

in your Anti-Virus software to avoid false alerts.

Contents

Windows Defender	2
Avast Anitvirus	11
AVG	13
Norton AV	13
McAfee.....	14

Download and install the latest version of Woolich Racing Tuned. From the website.

[Woolich Racing Tuned Software](#)

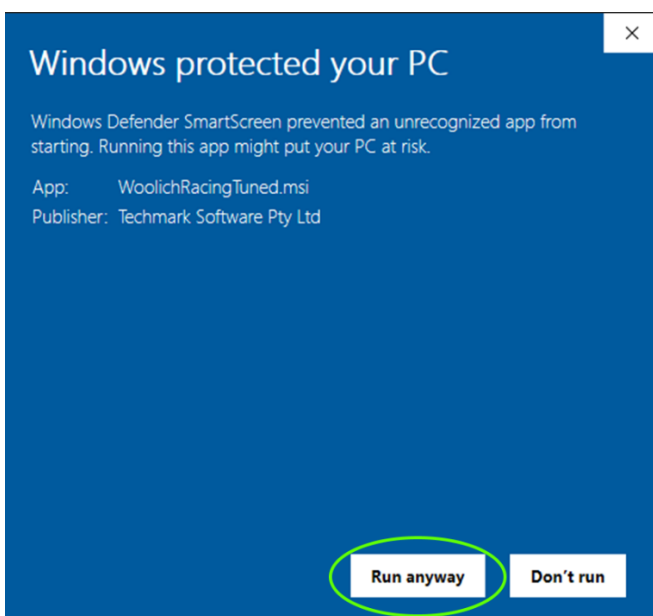
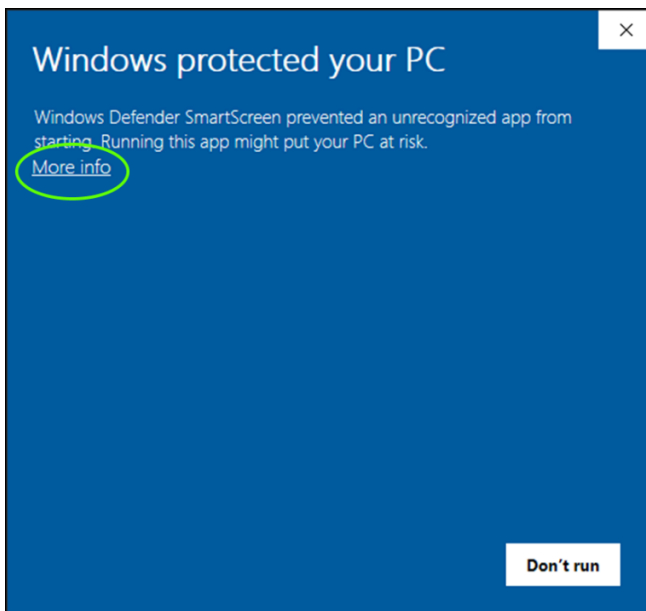
If your AV software flags it as a Trojan and will not let you download it, you will have to turn off your Live Protection for a few minutes to download and install the software. Then Whitelist it in your AV software.

Windows Defender


The following outlines how to achieve this in Windows Defender AV.

The end of this document lists how to whitelist for other common AV software.

Double-click the **WoolichRacingTuned.exe** file

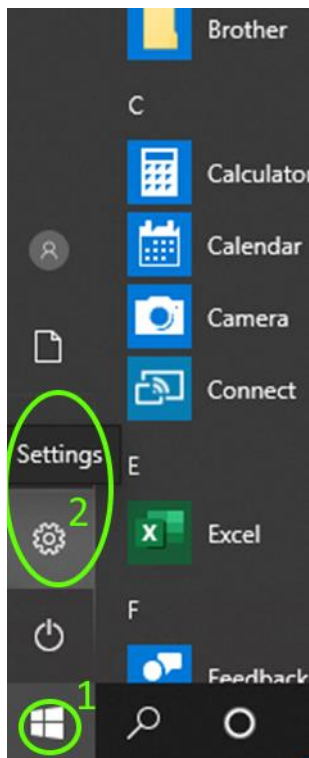


Windows Installer

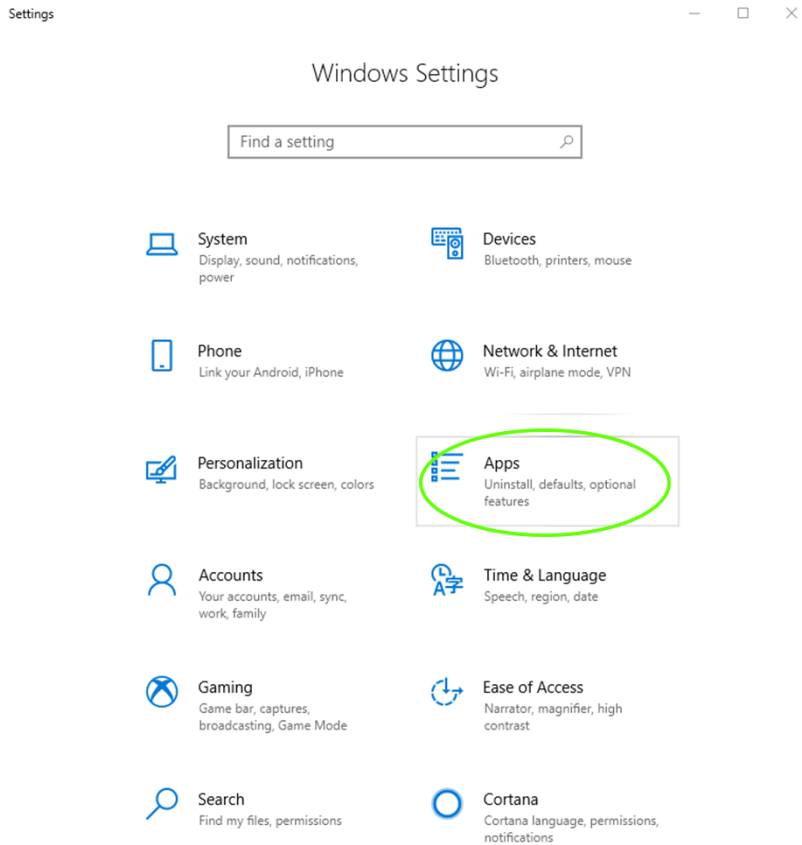
 Another version of this product is already installed. Installation of this version cannot continue. To configure or remove the existing version of this product, use Add/Remove Programs on the Control Panel.

OK

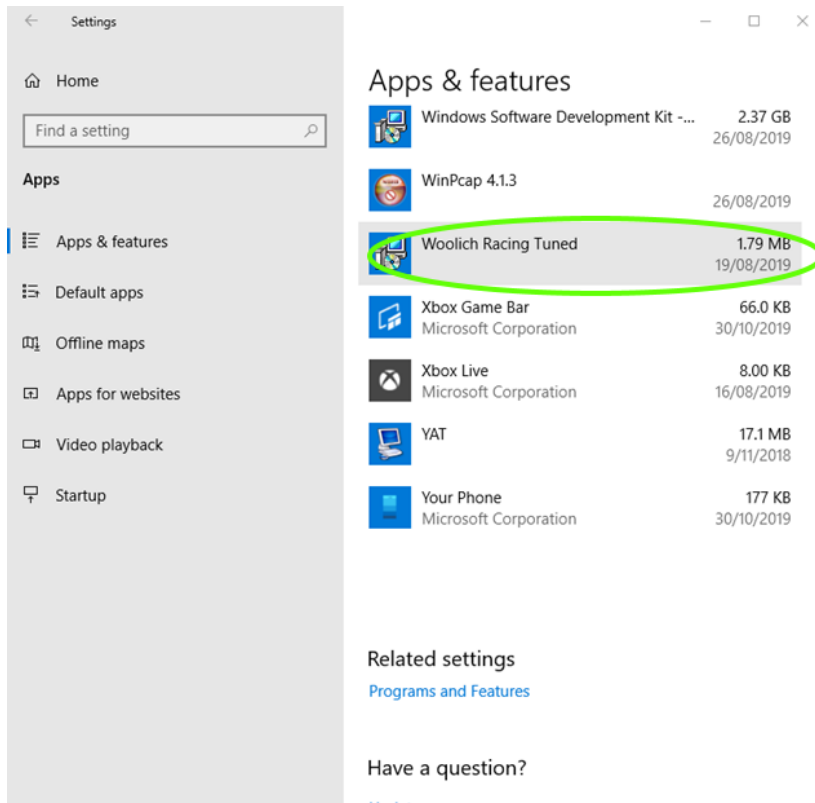
Click START on the taskbar, and select SETTINGS



Click the Apps Button



Scroll down to find Woolich Racing Tuned, and left click it





Select Uninstall

Settings

Home

Find a setting

Apps

- Apps & features
- Default apps
- Offline maps
- Apps for websites
- Video playback
- Startup

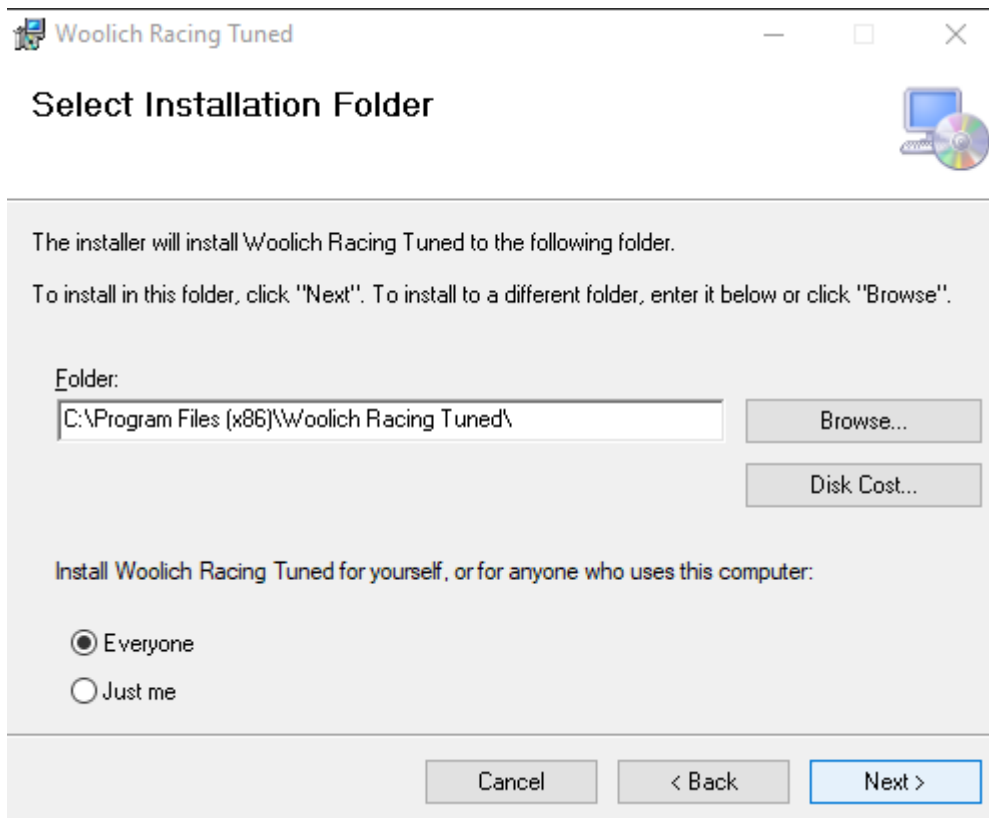
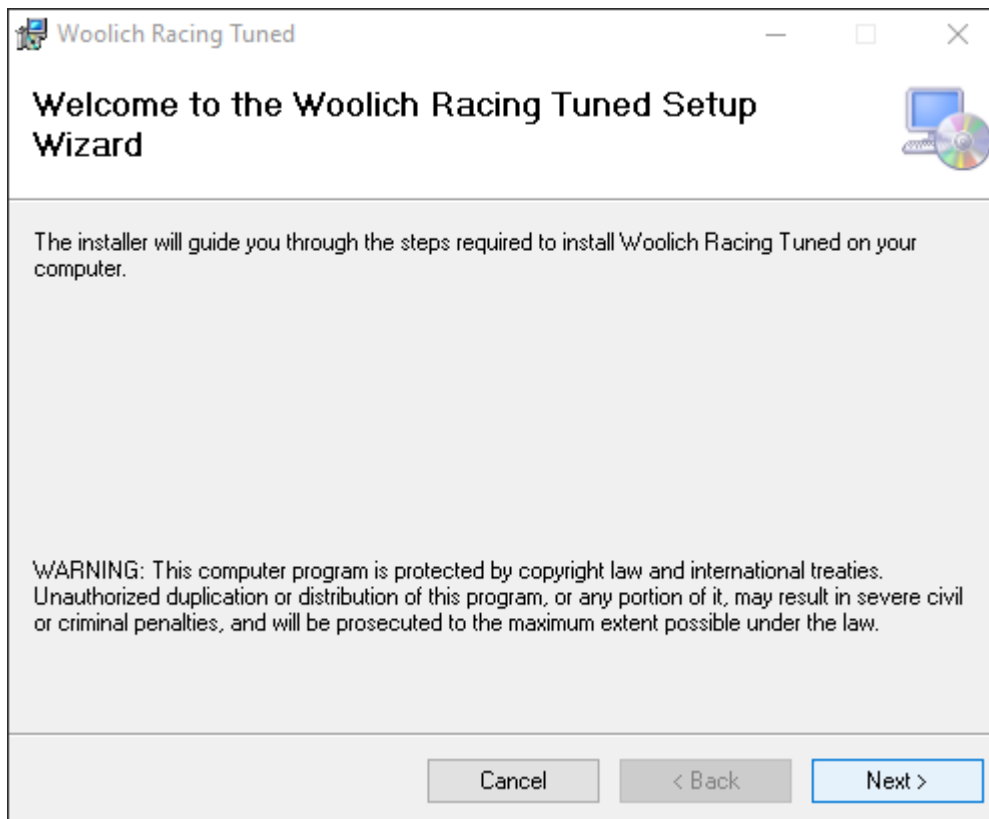
Apps & features

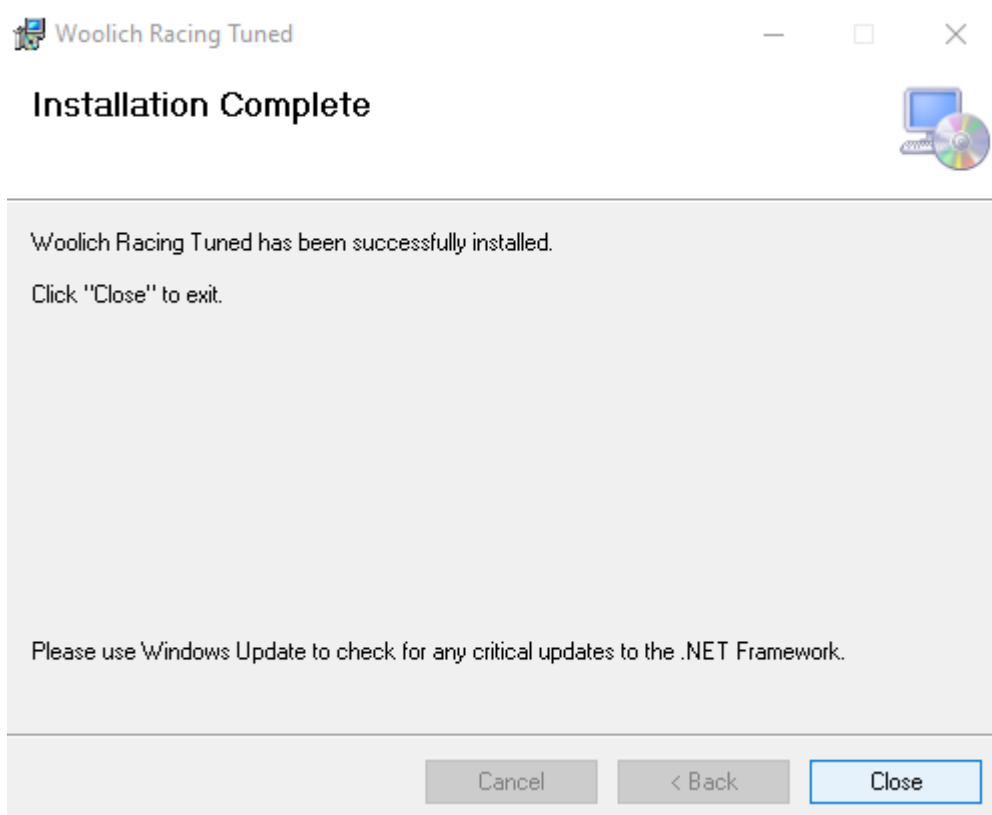
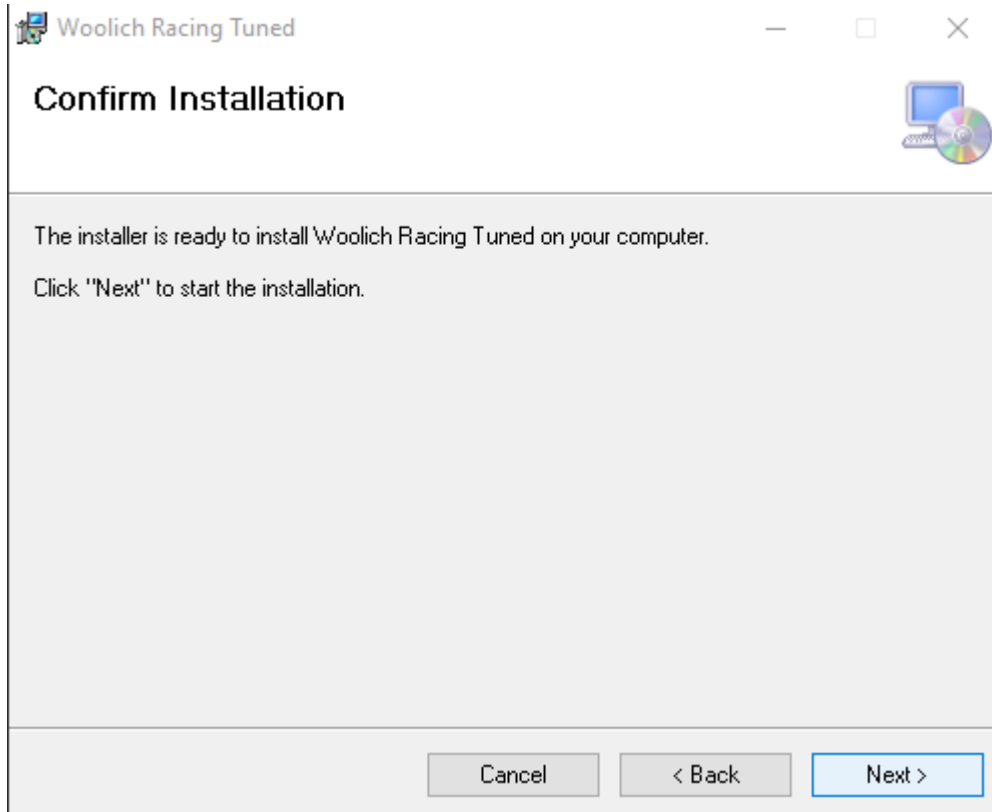
	Windows Software Development Kit - ...	2.37 GB	26/08/2019
	WinPcap 4.1.3		26/08/2019
	Woolich Racing Tuned 4.9.0	1.79 MB	19/08/2019
		Modify	Uninstall
	Xbox Game Bar Microsoft Corporation	66.0 KB	30/10/2019
	Xbox Live Microsoft Corporation	8.00 KB	16/08/2019
	YAT	17.1 MB	9/11/2018
	Your Phone Microsoft Corporation	177 KB	30/10/2019

Related settings


[Programs and Features](#)

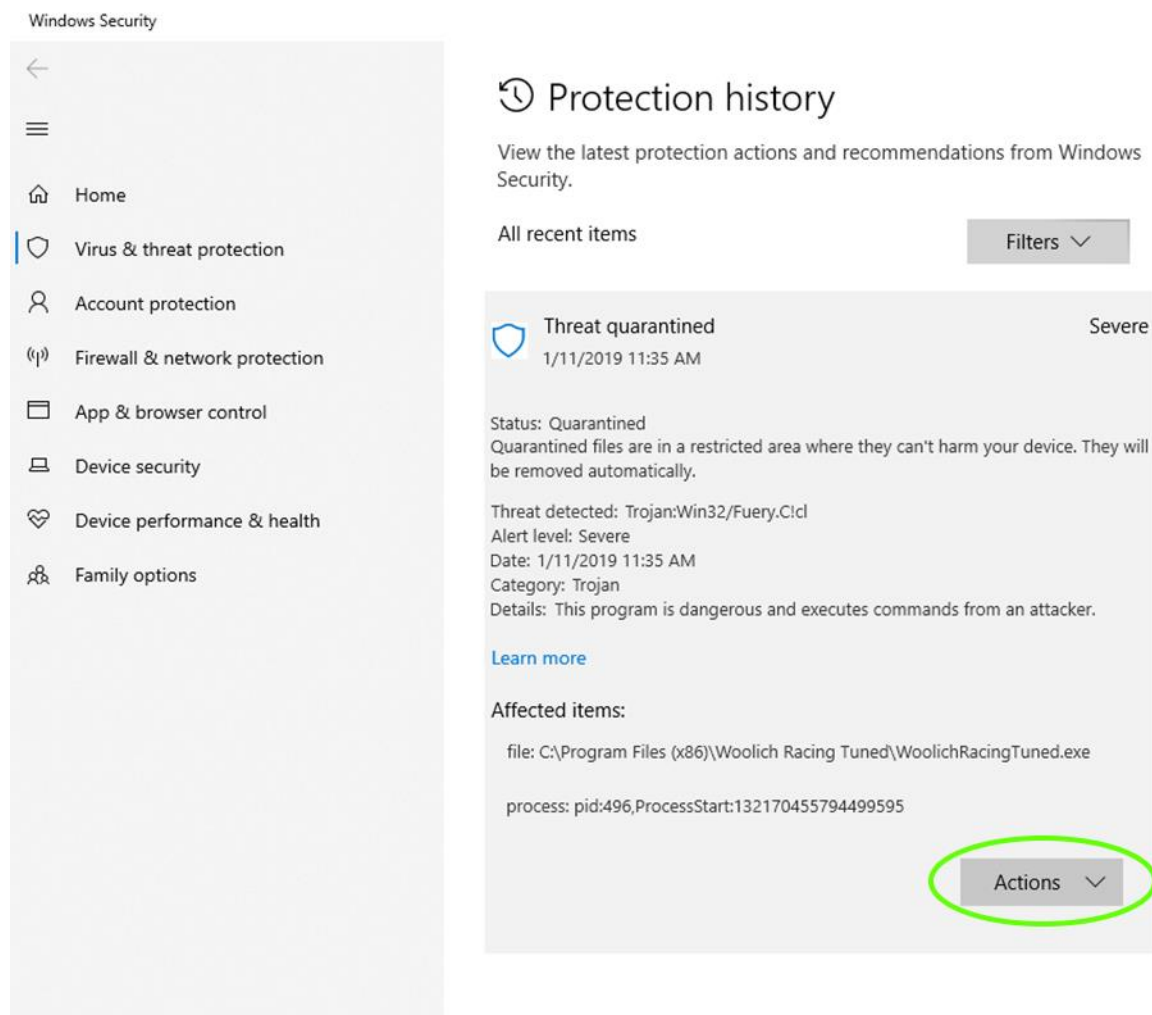
Once you have uninstalled the old version, you can run the WRT install file again.





After installation, you will see this box pop up in the bottom Right hand side of the screen.

Click it. (you can also find this on the sidebar by clicking the  icon in the far right of the taskbar, OR, going to START > Settings > Update and Security > Windows Security > Open Windows Security. Click Virus and Threat Protection Tab, then select the Protection History)



Windows Security

←


☰

- Home
- Virus & threat protection
- Account protection
- Firewall & network protection
- App & browser control
- Device security
- Device performance & health
- Family options

Protection history

View the latest protection actions and recommendations from Windows Security.

All recent items Filters ▾

 **Threat quarantined** Severe

1/11/2019 11:35 AM

Status: Quarantined
Quarantined files are in a restricted area where they can't harm your device. They will be removed automatically.

Threat detected: Trojan:Win32/Fuery.C!d
Alert level: Severe
Date: 1/11/2019 11:35 AM
Category: Trojan
Details: This program is dangerous and executes commands from an attacker.

[Learn more](#)

Affected items:

file: C:\Program Files (x86)\Woolich Racing Tuned\WoolichRacingTuned.exe

process: pid:496,ProcessStart:132170455794499595

Actions ▾



Windows Security

←

☰

🏠 Home

🛡️ Virus & threat protection

👤 Account protection

🔒 Firewall & network protection

📁 App & browser control

📱 Device security

💓 Device performance & health

👨‍👩‍👧‍👦 Family options

🕒 Protection history

View the latest protection actions and recommendations from Windows Security.

All recent items Filters ▾

🛡️ **Threat quarantined** Severe

1/11/2019 11:35 AM

Status: Quarantined
Quarantined files are in a restricted area where they can't harm your device. They will be removed automatically.

Threat detected: Trojan:Win32/Fuery.C!cl
Alert level: Severe
Date: 1/11/2019 11:35 AM
Category: Trojan
Details: This program is dangerous and executes commands from an attacker.

[Learn more](#)

Affected items:

file: C:\Program Files (x86)\Woolich Racing Tuned\WoolichRacingTuned.exe

process: pid:496,ProcessStart:132170455794499595

Actions ▾

- Restore
- Remove

The WRT file has been whitelisted and should now start up and function without warnings from your AV software.



Home

Virus & threat protection

Account protection

Firewall & network protection

App & browser control

Device security

Device performance & health

Family options

Protection history

View the latest protection actions and recommendations from Windows Security.

All recent items

Filters

Threat removed or restored
1/11/2019 11:35 AM

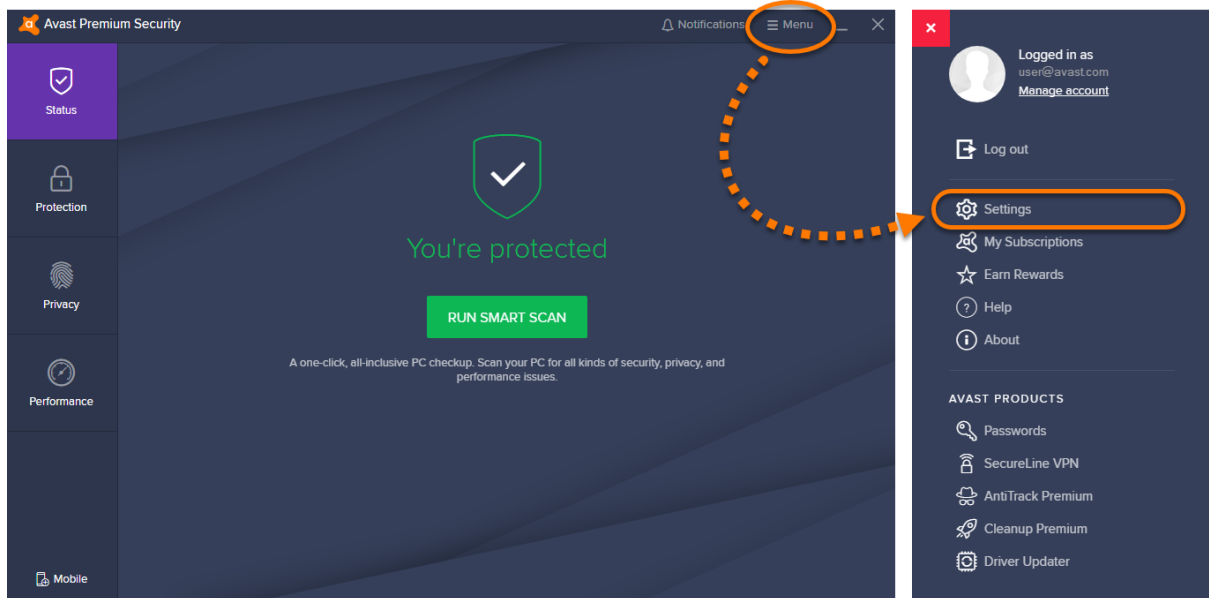
Severe

The following section lists how to add a program to the whitelist in other common AV software.

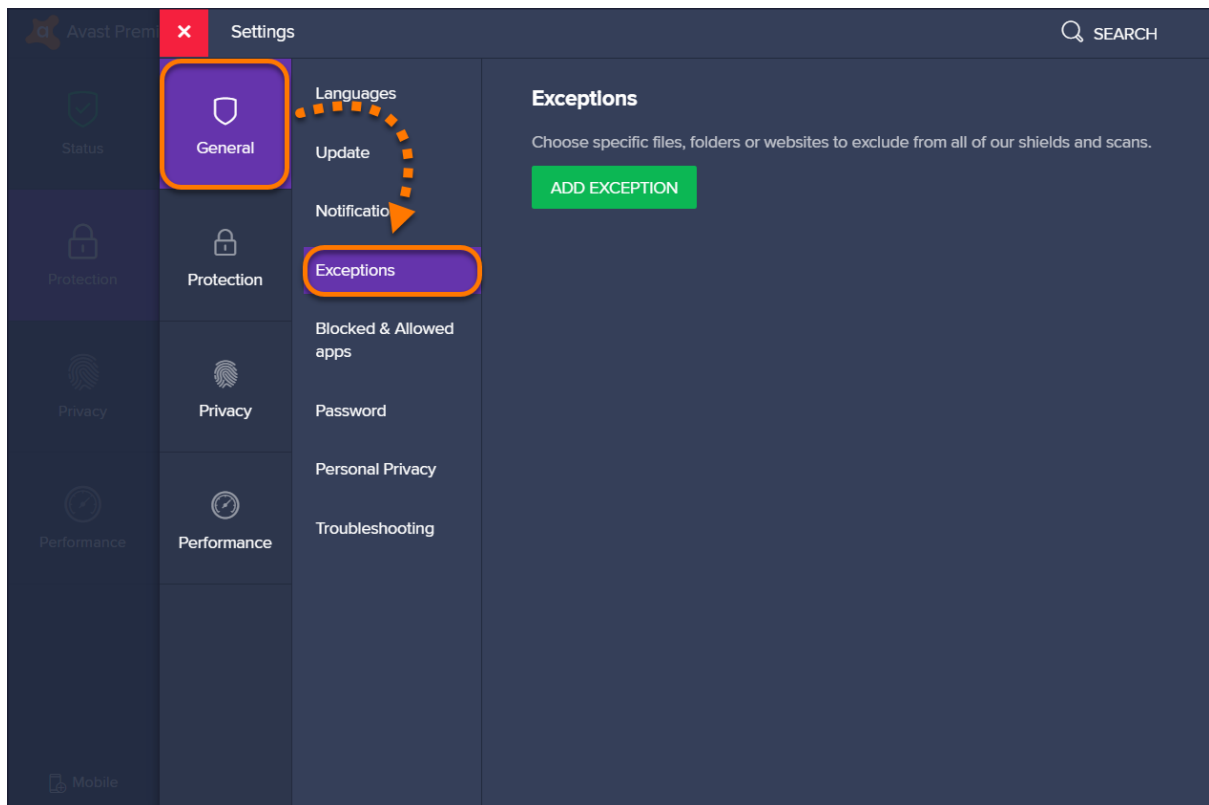
You may not have the same software, but the process is the same.

Avast Anitvirus

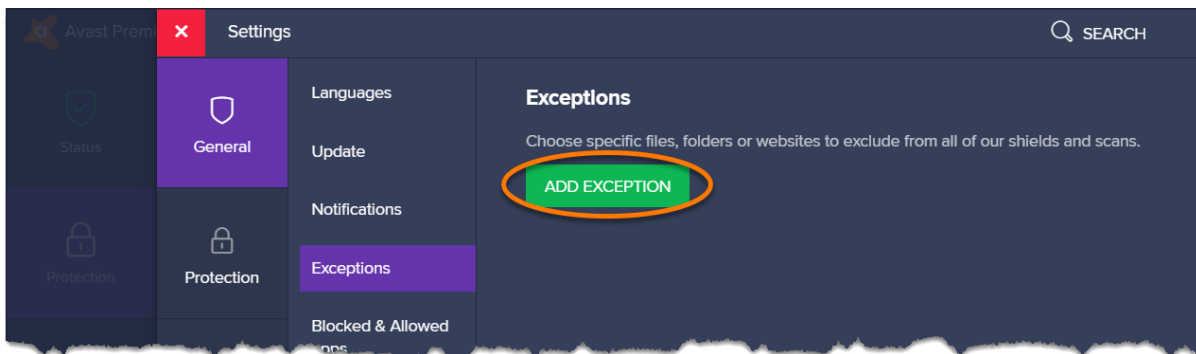
Open the Avast Antivirus user interface and select ☰ Menu ▶ Settings.



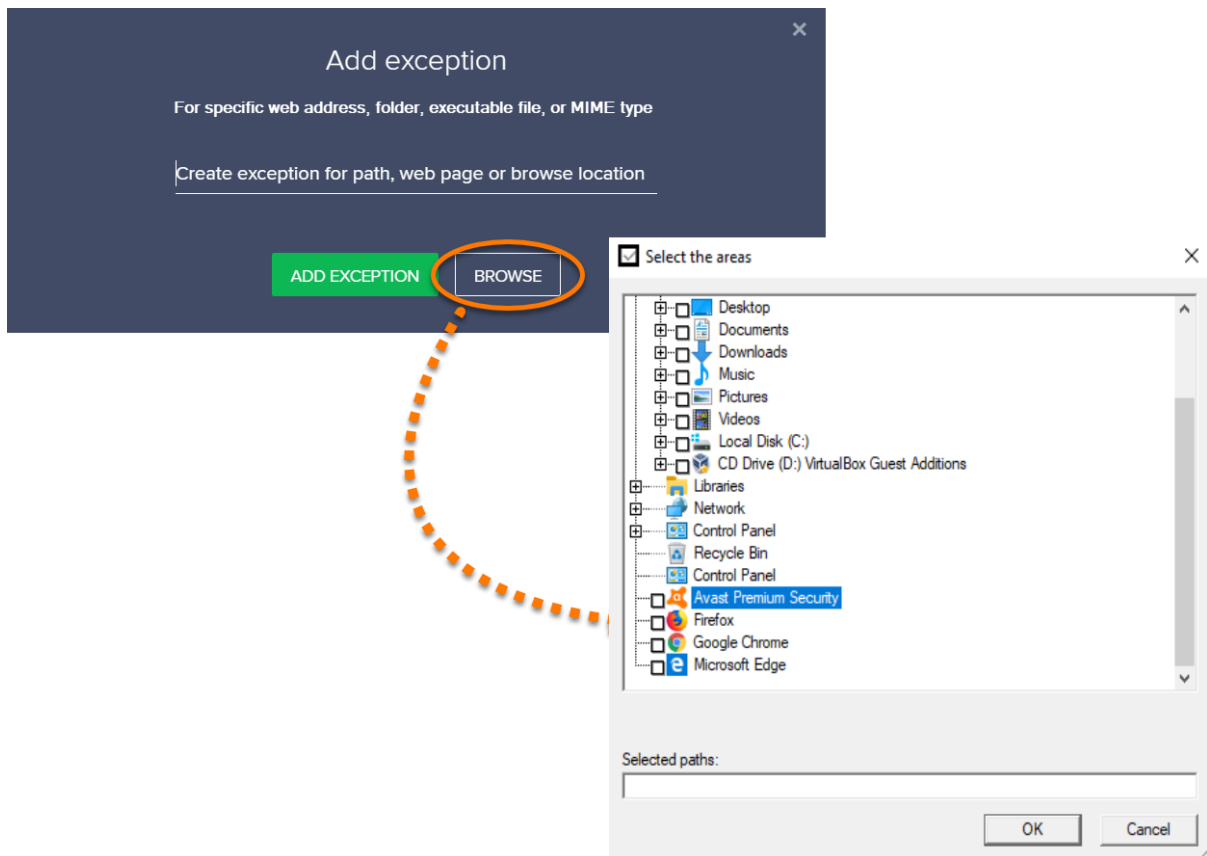
Ensure the General tab is selected, then click Exceptions.



Click the Add Exception button.



Click Browse, open the list to show the folder you have installed the WRT software to. (default location is C:/Program Files (x86)/Woolich Racing Tuned) tick the box next to the WRT folder, then click OK.





AVG

1. Double-click the AVG icon in the bottom-right corner of the taskbar -- in the system tray -- to open the AVG Control Panel.
2. Double-click "Anti-Virus" in the Control Panel to view its settings.
3. Click the "Manage exceptions" button.
4. Click the "Add Path" button to add an entire folder to the Exceptions list or "Add File" button to add a single file to the list.
5. Select the folder or file and click "OK" to add it to the Exceptions list. (default location is C:/Program Files (x86)/Woolich Racing Tuned)
6. Click "Apply" to apply the new settings.
7. Click "OK" to close the AVG Advanced Settings window.

Norton AV

1. Click the "Settings" link in the Norton Antivirus window to navigate to Settings. The Computer tab is selected by default.
2. Click the "Antivirus and SONAR Exclusions" link and then click the "Configure" link next to "Items to Exclude from Scans." The Scan Exclusions window opens.
3. Click the "Add" button, then the "Browse" button. Select the file you want to exclude from scans and click "OK" twice to add the file to the Exclusions list. You can select an entire folder, and all its subfolders, if you want to exclude a group of files. (default location is C:/Program Files (x86)/Woolich Racing Tuned)
4. Click "Apply" and then "OK" to apply and save the new settings.
5. Click the "Configure" link next to "Items to Exclude from Auto-Protect, SONAR and Download Intelligence Detection."
6. Use the same method to add the file or folder to the Auto-Protect, SONAR and Download Intelligence Detection Exclusions list.
7. Click "OK" to return to the main Norton Antivirus window.



McAfee

1. Type "VirusScan Console" at the Start screen and press "Enter."
2. Right-click "On-Access Scanner" listed in the left window pane and select "Properties."
3. Click "All Processes, Detection, Exclusions" and select the "Exclusions" tab.
4. Click the "Add" button, click "Browse" and select the folder or file you want to add as an exception. (default location is C:/Program Files (x86)/Woolich Racing Tuned)
5. Click "OK" in the "Add Exclusions Item" dialog box and click "OK" in the "Set Exclusions" prompt.
6. Click "Apply" in the "On-Demand Scan Properties" window and click "OK" to save your settings.